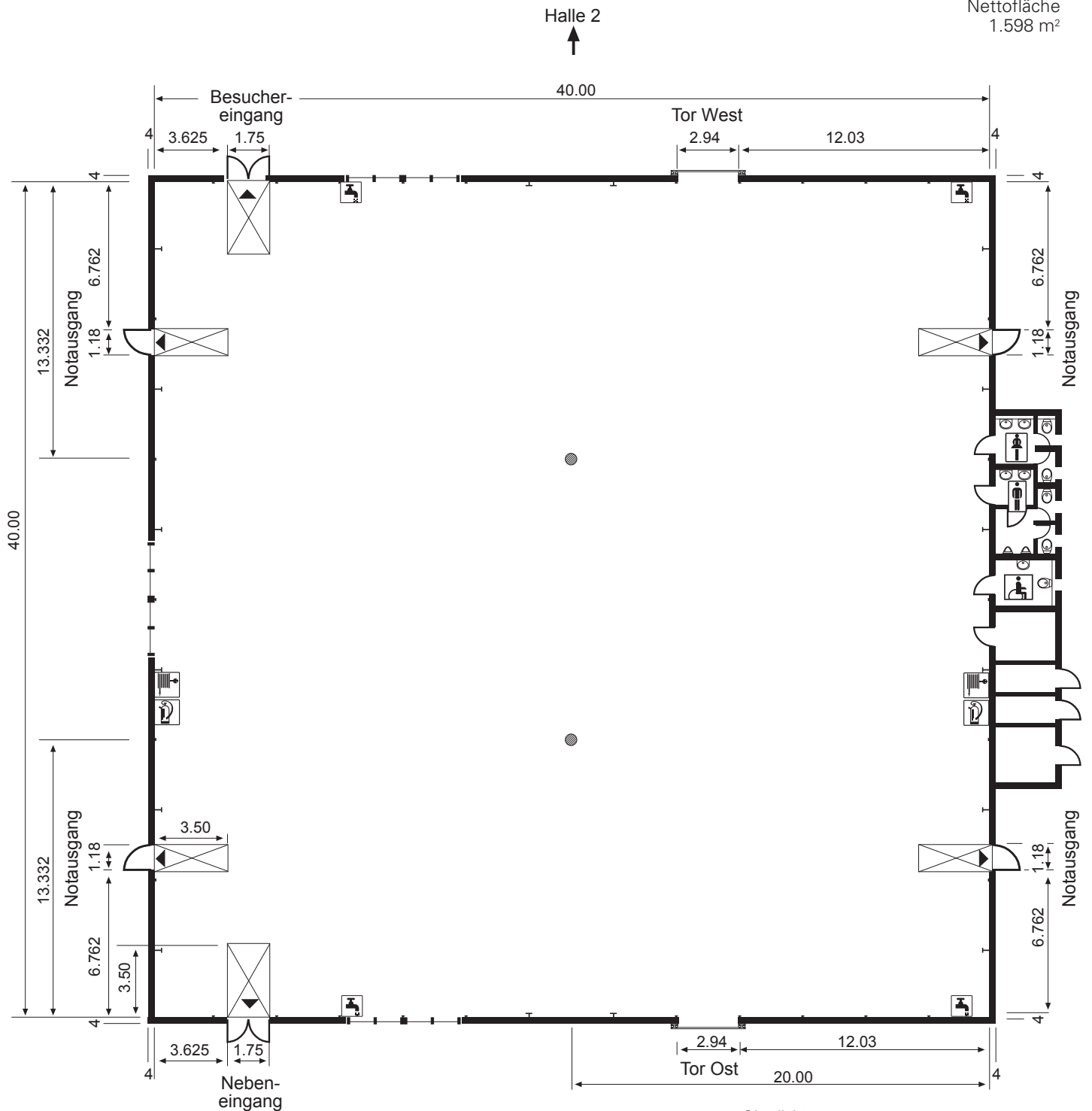

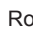

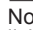
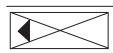



Kapazität
 Bruttofläche
 40 m x 40 m = 1.600 m²
 Nettofläche
 1.598 m²



-  Pfeiler \varnothing 0,50 m
-  Rolltore
lichte Breite x lichte Höhe
2,94 m x 3,86 m
-  Eingangstüren
lichte Breite x lichte Höhe
1,75 m x 2,06 m
-  Notausgangstüren
lichte Breite x lichte Höhe
1,18 m x 2,00 m

-  Notausgang
Türbreite x 3,50 m
-  Wasser

